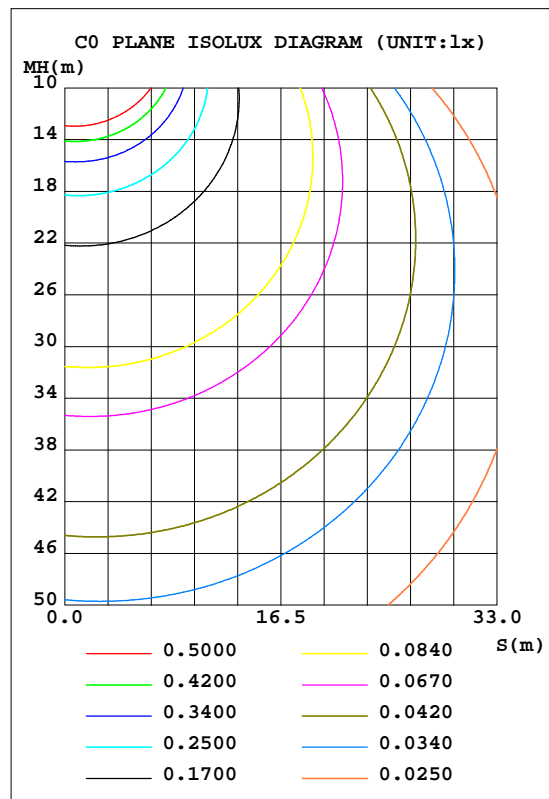
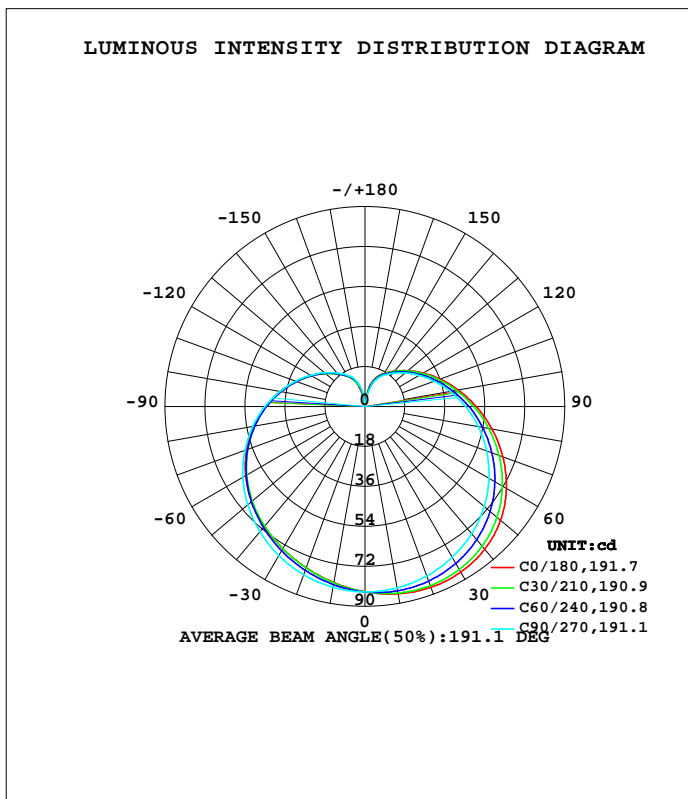


LUMINAIRE PHOTOMETRIC TEST REPORT

NAME:	TYPE:	WEIGHT:
SPEC.:	DIM.:	SERIAL No.:01
MFR.:	SUR.:	Shielding Angle:

DATA OF LAMP		PHOTOMETRIC DATA			
MODEL	A3-3-KD3 G3	Imax(cd)	86.67	S/MH(C0/180)	1.34
NOMINAL POWER(W)	7	LOR(%)	100.0	S/MH(C90/270)	1.40
RATED VOLTAGE(V)	220	TOTAL FLUX(lm)	590.09	h UP, DN(C0-180)	15.3, 35.4
NOMINAL FLUX(lm)	590.09	CIE CLASS	SEMI-D.	h UP, DN(C180-360)	15.0, 34.3
LAMPS INSIDE	1	h up(%)	30.3	CIBSE SHR NOM	1.50
TEST VOLTAGE(V)	220	h down(%)	69.7	CIBSE SHR MAX	1.55



C Range: 0 - 360DEG  
 C Interval: 30.0DEG  
 Test Speed: HIGH  
 Temperature:25.3DEG  
 Operators:  
 Test Date:2018-10-26

Range: 0 - 180DEG  
 Interval: 1.0DEG  
 Test System:EVERFINE GO-SPEX500\_V1 SYSTEM V2.0.405.8  
 Humidity:65.0%  
 Test Distance:3.116m [K=1.0000]  
 Remarks:

ZONAL FLUX DIAGRAM

ZONAL FLUX DIAGRAM:

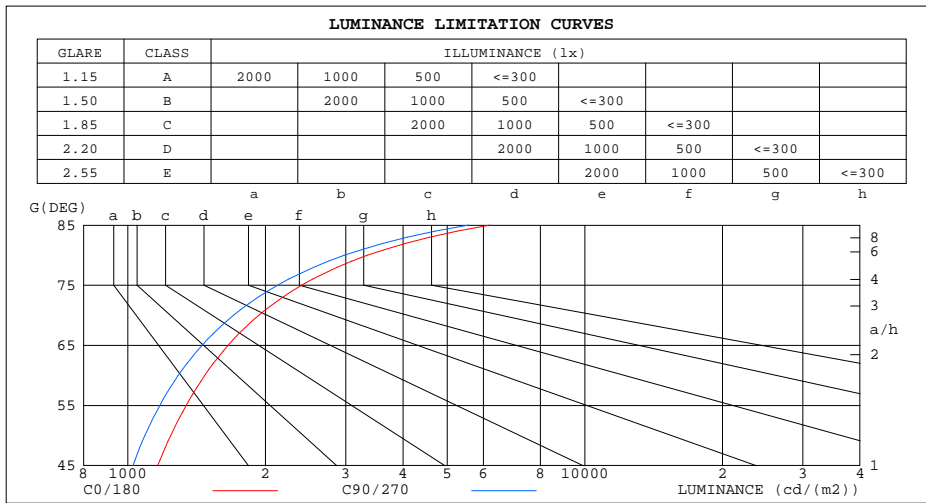
g	C0	C45	C90	C135	C180	C225	C270	C315	g	F zone	F total	%lum,lamp
10	85.64	84.79	82.96	81.34	80.56	81.08	82.64	84.59	0- 10	7.942	7.942	1.35,1.35
20	86.63	84.76	81.23	78.54	77.31	78.00	80.63	84.49	10- 20	23.30	31.24	5.29,5.29
30	86.14	83.22	78.45	75.33	73.95	74.49	77.53	82.98	20- 30	37.13	68.38	11.6,11.6
40	83.89	80.17	74.75	71.77	70.55	70.71	73.60	79.99	30- 40	48.59	117.0	19.8,19.8
50	79.70	75.57	70.09	67.59	66.66	66.49	68.91	75.47	40- 50	56.94	173.9	29.5,29.5
60	73.55	69.50	64.49	62.63	62.03	61.63	63.49	69.49	50- 60	61.54	235.4	39.9,39.9
70	66.04	62.49	58.27	57.01	56.69	56.16	57.52	62.53	60- 70	62.25	297.7	50.4,50.4
80	58.03	55.13	51.78	50.99	50.88	50.33	51.26	55.20	70- 80	59.50	357.2	60.5,60.5
90	50.17	47.93	45.31	44.81	44.84	44.36	45.04	48.00	80- 90	54.12	411.3	69.7,69.7
100	42.79	41.11	39.10	38.77	38.88	38.47	38.99	41.21	90-100	47.00	458.3	77.7,77.7
110	36.16	34.92	33.36	33.12	33.21	32.90	33.37	35.01	100-110	39.07	497.4	84.3,84.3
120	30.33	29.42	28.19	27.95	27.98	27.81	28.28	29.48	110-120	31.09	528.5	89.6,89.6
130	25.24	24.58	23.62	23.35	23.33	23.25	23.75	24.66	120-130	23.61	552.1	93.6,93.6
140	20.89	20.42	19.59	19.31	19.22	19.28	19.80	20.46	130-140	16.98	569.1	96.4,96.4
150	17.22	16.85	16.15	15.82	15.68	15.85	16.43	16.93	140-150	11.40	580.5	98.4,98.4
160	13.42	12.81	11.88	11.33	11.50	11.92	12.78	13.34	150-160	6.782	587.3	99.5,99.5
170	6.043	4.296	2.192	1.710	2.485	4.577	6.485	6.800	160-170	2.654	589.9	100,100
180	0.7278	0.7305	0.7303	0.7269	0.7278	0.7307	0.7306	0.7288	170-180	0.1784	590.1	100,100
DEG	LUMINOUS INTENSITY:cd									UNIT:lm		

C Range: 0 - 360DEG  
 C Interval: 30.0DEG  
 Test Speed: HIGH  
 Temperature:25.3DEG  
 Operators:  
 Test Date:2018-10-26

g Range: 0 - 180DEG  
 Interval: 1.0DEG  
 Test System:EVERFINE GO-SPEX500\_V1 SYSTEM V2.0.405.8  
 Humidity:65.0%  
 Test Distance:3.116m [K=1.0000]  
 Remarks:

LUMINANCE LIMITATION CURVES

NAME:	TYPE:	WEIGHT:
SPEC.:	DIM.:	SERIAL No.:01
MFR.:	SUR.:	Shielding Angle:



LUMINANCE cd/(m2)		
G(DEG)	C0/180	C90/270
85	6210	5568
80	3347	2981
75	2402	2126
70	1934	1703
65	1657	1454
60	1473	1289
55	1342	1174
50	1242	1090
45	1163	1026

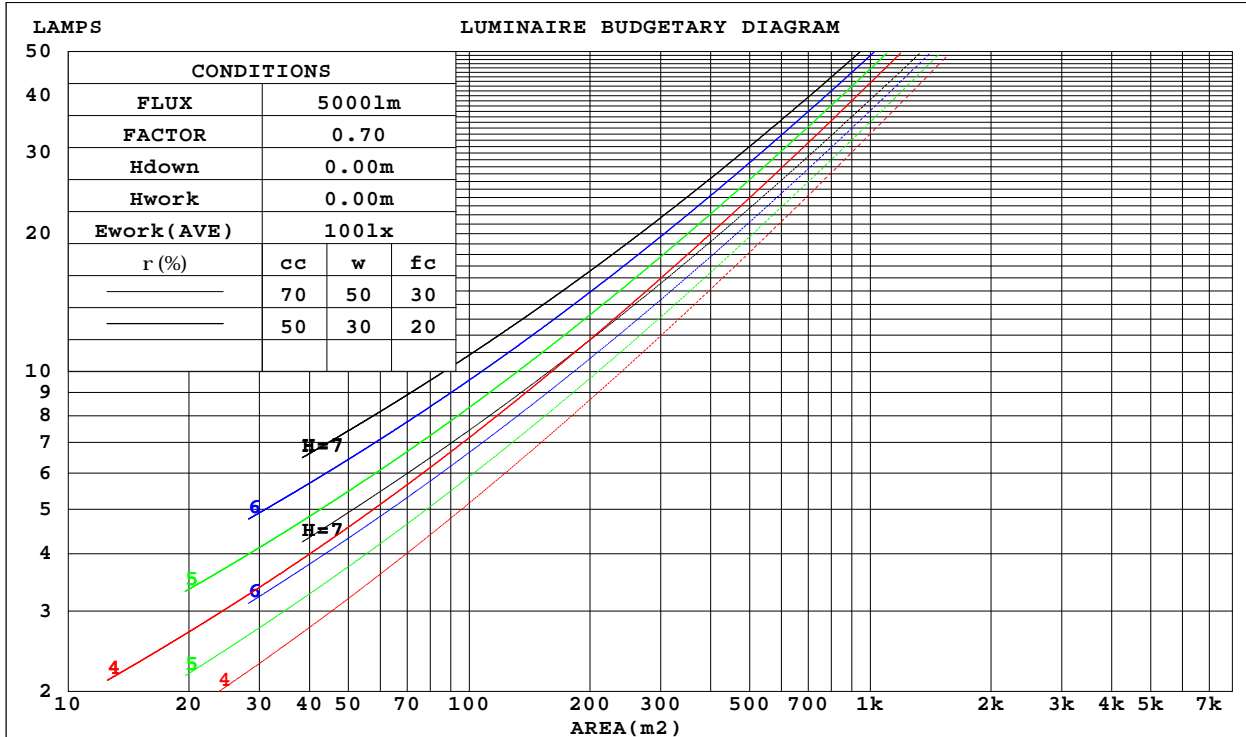
C Range: 0 - 360DEG  
 C Interval: 30.0DEG  
 Test Speed: HIGH  
 Temperature: 25.3DEG  
 Operators:  
 Test Date: 2018-10-26

G Range: 0 - 180DEG  
 G Interval: 1.0DEG  
 Test System: EVERFINE GO-SPEX500\_V1 SYSTEM V2.0.405.8  
 Humidity: 65.0%  
 Test Distance: 3.116m [K=1.0000]  
 Remarks:

CU AND LUMINAIRE BUDGETARY ESTIMATE DIAGRAM

NAME:	TYPE:	WEIGHT:
SPEC.:	DIM.:	SERIAL No.:01
MFR.:	SUR.:	Shielding Angle:

r <sub>cc</sub>	80%			70%			50%			30%			10%			0
r <sub>w</sub>	50%	30%	10%	50%	30%	10%	50%	30%	10%	50%	30%	10%	50%	30%	10%	0
r <sub>fc</sub>	20%			20%			20%			20%			20%			0
RCR	RCR:Room Cavity Ratio						Coefficients of Utilization(CU)									
0.0	1.12	1.12	1.12	1.06	1.06	1.06	.94	.94	.94	.84	.84	.84	.74	.74	.74	.70
1.0	.91	.86	.81	.86	.81	.76	.76	.72	.68	.67	.64	.61	.59	.56	.54	.50
2.0	.78	.69	.63	.73	.66	.59	.64	.58	.53	.56	.52	.48	.49	.46	.42	.38
3.0	.67	.58	.50	.63	.55	.48	.55	.49	.43	.49	.43	.39	.42	.38	.34	.30
4.0	.58	.49	.41	.55	.46	.39	.49	.41	.36	.43	.37	.32	.37	.32	.28	.25
5.0	.52	.42	.35	.49	.40	.33	.43	.36	.30	.38	.32	.27	.33	.28	.24	.21
6.0	.46	.37	.30	.43	.35	.28	.38	.31	.26	.34	.28	.23	.30	.25	.21	.18
7.0	.41	.32	.26	.39	.31	.25	.35	.28	.22	.31	.25	.20	.27	.22	.18	.16
8.0	.37	.29	.23	.35	.27	.22	.32	.25	.20	.28	.22	.18	.25	.20	.16	.14
9.0	.34	.26	.20	.32	.25	.19	.29	.22	.18	.26	.20	.16	.23	.18	.14	.12
10.0	.31	.23	.18	.30	.22	.17	.27	.20	.16	.24	.18	.14	.21	.16	.13	.11



C Range: 0 - 360DEG  
 C Interval: 30.0DEG  
 Test Speed: HIGH  
 Temperature:25.3DEG  
 Operators:  
 Test Date:2018-10-26

Range: 0 - 180DEG  
 Interval: 1.0DEG  
 Test System:EVERFINE GO-SPEX500\_V1 SYSTEM V2.0.405.8  
 Humidity:65.0%  
 Test Distance:3.116m [K=1.0000]  
 Remarks:

WEC AND CCEC

NAME:	TYPE:	WEIGHT:
SPEC.:	DIM.:	SERIAL No.:01
MFR.:	SUR.:	Shielding Angle:

rcc	80%			70%			50%			30%			10%			0
rw	50%	30%	10%	50%	30%	10%	50%	30%	10%	50%	30%	10%	50%	30%	10%	0
rfc	20%			20%			20%			20%			20%			0
RCR	RCR:Room Cavity Ratio						Wall Exitance Coefficients(WEC)									
0.0																
1.0	.409	.232	.074	.392	.224	.071	.361	.207	.066	.333	.192	.062	.307	.178	.057	
2.0	.346	.189	.058	.331	.182	.056	.303	.168	.052	.277	.155	.049	.253	.143	.045	
3.0	.303	.161	.048	.290	.155	.047	.264	.143	.044	.240	.132	.040	.219	.121	.037	
4.0	.271	.141	.041	.259	.135	.040	.235	.125	.037	.214	.115	.035	.193	.105	.032	
5.0	.245	.125	.036	.234	.120	.035	.212	.111	.033	.192	.102	.030	.174	.093	.028	
6.0	.223	.112	.032	.213	.108	.031	.194	.099	.029	.175	.091	.027	.158	.083	.025	
7.0	.205	.102	.029	.196	.098	.028	.178	.090	.026	.161	.083	.024	.145	.075	.022	
8.0	.190	.093	.026	.181	.089	.025	.165	.082	.023	.149	.076	.022	.134	.069	.020	
9.0	.177	.085	.024	.169	.082	.023	.153	.076	.021	.139	.070	.020	.125	.064	.018	
10.0	.165	.079	.022	.158	.076	.021	.143	.070	.020	.130	.064	.018	.117	.059	.017	

rcc	80%			70%			50%			30%			10%			0
rw	50%	30%	10%	50%	30%	10%	50%	30%	10%	50%	30%	10%	50%	30%	10%	0
rfc	20%			20%			20%			20%			20%			0
RCR	RCR:Room Cavity Ratio						Ceiling Cavity Exitance Coefficients(CCEC)									
0.0	.421	.421	.421	.360	.360	.360	.246	.246	.246	.141	.141	.141	.045	.045	.045	
1.0	.420	.388	.359	.359	.333	.309	.246	.229	.214	.141	.133	.124	.045	.043	.040	
2.0	.414	.366	.326	.354	.315	.282	.243	.218	.196	.140	.127	.115	.045	.041	.038	
3.0	.406	.350	.305	.348	.302	.265	.239	.210	.186	.138	.123	.109	.044	.040	.036	
4.0	.399	.338	.292	.342	.292	.253	.235	.204	.178	.136	.119	.106	.044	.039	.035	
5.0	.391	.329	.282	.336	.284	.246	.231	.199	.173	.134	.117	.103	.043	.038	.034	
6.0	.384	.321	.276	.330	.278	.240	.228	.195	.170	.132	.114	.101	.043	.037	.033	
7.0	.377	.315	.271	.324	.273	.236	.224	.191	.167	.130	.113	.100	.042	.037	.033	
8.0	.370	.309	.267	.318	.268	.233	.220	.188	.165	.128	.111	.099	.041	.036	.033	
9.0	.364	.304	.264	.313	.264	.231	.217	.186	.164	.126	.110	.098	.041	.036	.032	
10.0	.358	.300	.262	.308	.261	.229	.214	.184	.163	.125	.109	.097	.040	.036	.032	

C Range: 0 - 360DEG  
 C Interval: 30.0DEG  
 Test Speed: HIGH  
 Temperature:25.3DEG  
 Operators:  
 Test Date:2018-10-26

Range: 0 - 180DEG  
 Interval: 1.0DEG  
 Test System:EVERFINE GO-SPEX500\_V1 SYSTEM V2.0.405.8  
 Humidity:65.0%  
 Test Distance:3.116m [K=1.0000]  
 Remarks:

UGR(Unified Glare Rating) Table

NAME:		TYPE:					WEIGHT:				
SPEC.:		DIM.:					SERIAL No.:01				
MFR.:		SUR.:					Shielding Angle:				
ceiling/cavity		0.7	0.7	0.5	0.5	0.3	0.7	0.7	0.5	0.5	0.3
walls		0.5	0.3	0.5	0.3	0.3	0.5	0.3	0.5	0.3	0.3
working plane		0.2	0.2	0.2	0.2	0.2	0.2	0.2	0.2	0.2	0.2
Room dimensions		Viewed crosswise					Viewed endwise				
x = 2H y = 2H		14.2	15.4	14.8	16.1	16.9	13.6	14.9	14.2	15.5	16.3
	3H	16.9	18.1	17.6	18.8	19.6	16.3	17.4	17.0	18.1	19.0
	4H	18.4	19.5	19.1	20.3	21.1	17.8	18.9	18.5	19.6	20.4
	6H	20.1	21.2	20.8	21.9	22.8	19.4	20.5	20.1	21.2	22.1
	8H	21.0	22.1	21.8	22.8	23.7	20.3	21.3	21.1	22.1	23.0
	12H	22.1	23.1	22.9	23.8	24.8	21.4	22.4	22.1	23.1	24.0
	4H 2H	15.0	16.1	15.7	16.8	17.6	14.6	15.7	15.3	16.4	17.2
	3H	17.9	18.9	18.6	19.6	20.5	17.4	18.4	18.1	19.1	20.0
	4H	19.6	20.5	20.3	21.2	22.2	19.0	19.9	19.8	20.7	21.6
	6H	21.4	22.2	22.2	23.0	24.0	20.8	21.6	21.6	22.4	23.4
	8H	22.5	23.2	23.3	24.0	25.0	21.9	22.6	22.6	23.4	24.4
	12H	23.7	24.3	24.5	25.2	26.2	23.0	23.7	23.8	24.5	25.5
	8H 4H	20.1	20.9	20.9	21.7	22.7	19.7	20.5	20.5	21.3	22.3
	6H	22.3	22.9	23.1	23.8	24.8	21.8	22.4	22.6	23.3	24.3
	8H	23.5	24.1	24.4	24.9	26.0	23.0	23.6	23.8	24.4	25.5
	12H	24.9	25.4	25.8	26.3	27.4	24.4	24.9	25.2	25.7	26.8
	12H 4H	20.3	21.0	21.1	21.8	22.8	19.9	20.6	20.7	21.4	22.4
	6H	22.5	23.1	23.4	24.0	25.0	22.1	22.7	22.9	23.5	24.6
	8H	23.9	24.4	24.7	25.2	26.3	23.4	23.9	24.3	24.8	25.8
Variations with the observer position at spacings:											
S = 1.0H		+ 0.1 / - 0.1					+ 0.1 / - 0.1				
1.5H		+ 0.2 / - 0.3					+ 0.2 / - 0.3				
2.0H		+ 0.3 / - 0.4					+ 0.3 / - 0.4				

CIE Pub.117, 590.1 lm Total Lamp Luminous Flux Correct (8log(F/F0) = -1.8)

C Range: 0 - 360DEG  
 C Interval: 30.0DEG  
 Test Speed: HIGH  
 Temperature:25.3DEG  
 Operators:  
 Test Date:2018-10-26

g Range: 0 - 180DEG  
 g Interval: 1.0DEG  
 Test System:EVERFINE GO-SPEX500\_V1 SYSTEM V2.0.405.8  
 Humidity:65.0%  
 Test Distance:3.116m [K=1.0000]  
 Remarks:

UTILIZATION FACTORS TABLE

NAME:	TYPE:	WEIGHT:
SPEC.:	DIM.:	SERIAL No.:01
MFR.:	SUR.:	Shielding Angle:

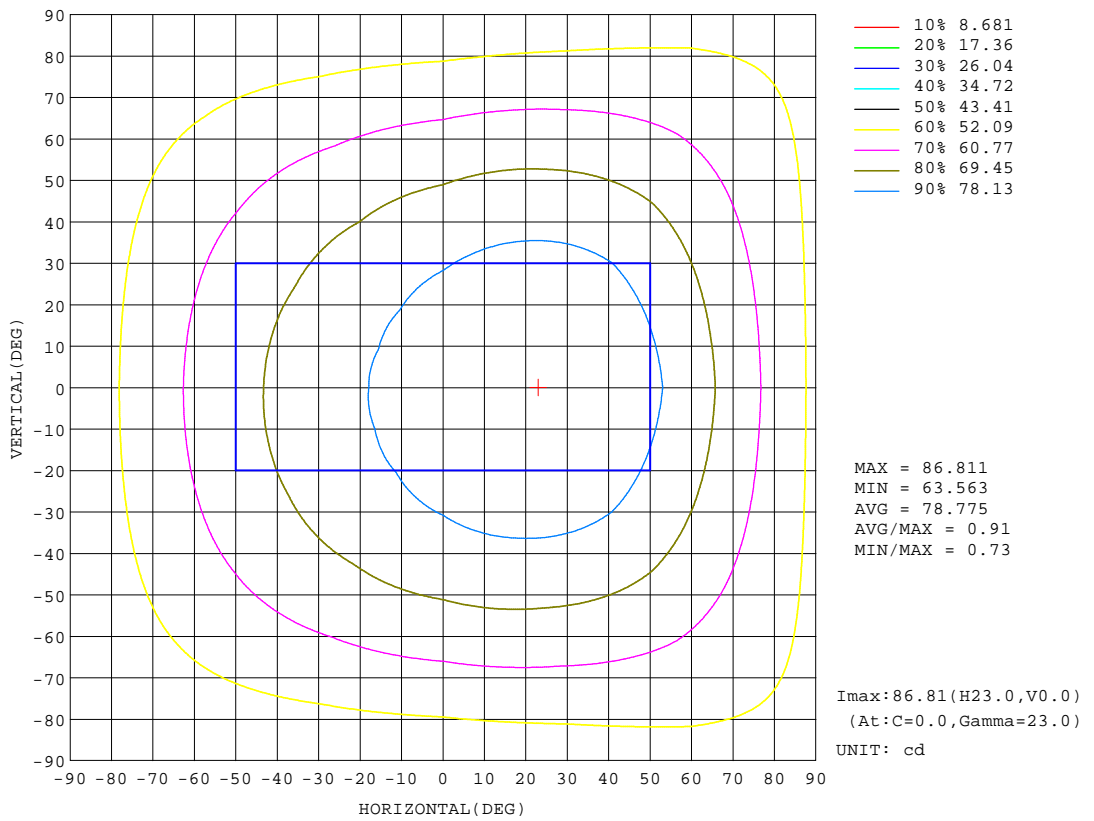
REFLECTANCE										
Ceiling	0.8	0.8	0.8	0.7	0.7	0.7	0.5	0.5	0.5	0
Walls	0.7	0.5	0.3	0.7	0.5	0.3	0.7	0.5	0.3	0
Working plane	0.2	0.2	0.2	0.2	0.2	0.2	0.2	0.2	0.2	0
ROOM INDEX	UTILIZATION FACTORS(PERCENT) $k(RI) \times RCR = 5$									
k = 0.60	42	29	22	40	28	21	38	27	21	14
0.80	50	37	28	48	36	28	45	34	27	18
1.00	58	44	35	55	42	34	51	42	32	22
1.25	64	51	41	61	49	40	56	45	38	27
1.50	70	56	47	66	54	45	60	50	43	30
2.00	78	65	56	74	62	54	66	57	50	36
2.50	83	71	62	78	68	60	70	62	55	40
3.00	86	76	67	82	72	65	73	66	59	43
4.00	91	82	75	86	78	72	77	71	65	47
5.00	95	87	80	90	83	76	80	74	69	50
ROOM INDEX	UF(total)									Direct
According to DIN EN 13032-2 2004			Suspended				SHRNOM = 1.00			

C Range: 0 - 360DEG  
 C Interval: 30.0DEG  
 Test Speed: HIGH  
 Temperature:25.3DEG  
 Operators:  
 Test Date:2018-10-26

Range: 0 - 180DEG  
 Interval: 1.0DEG  
 Test System:EVERFINE GO-SPEX500\_V1 SYSTEM V2.0.405.8  
 Humidity:65.0%  
 Test Distance:3.116m [K=1.0000]  
 Remarks:

ISOCANDELA DIAGRAM

NAME:	TYPE:	WEIGHT:
SPEC.:	DIM.:	SERIAL No.:01
MFR.:	SUR.:	Shielding Angle:



C Range: 0 - 360DEG  
 C Interval: 30.0DEG  
 Test Speed: HIGH  
 Temperature:25.3DEG  
 Operators:  
 Test Date:2018-10-26

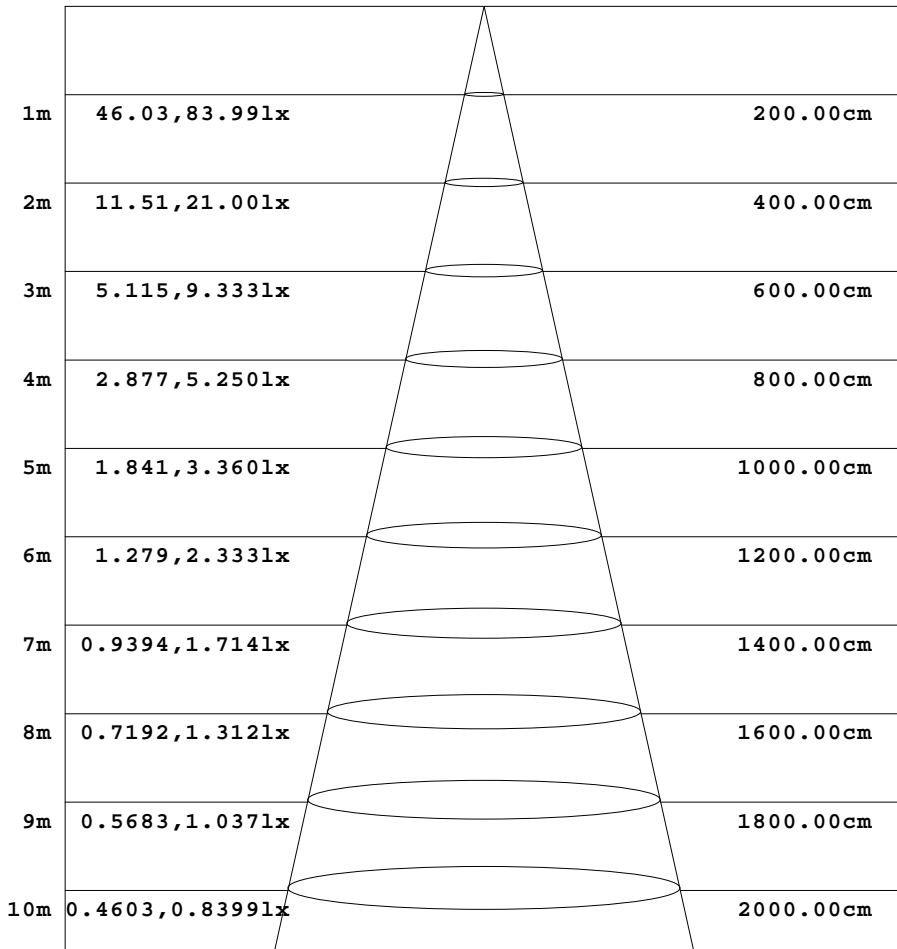
Range: 0 - 180DEG  
 Interval: 1.0DEG  
 Test System:EVERFINE GO-SPEX500\_V1 SYSTEM V2.0.405.8  
 Humidity:65.0%  
 Test Distance:3.116m [K=1.0000]  
 Remarks:



AAI Figure

NAME:	TYPE:	WEIGHT:
SPEC.:	DIM.:	SERIAL No.:01
MFR.:	SUR.:	Shielding Angle:

Flux out:144.6 lm



Height                      Eavg, Emax                      Angle:90.00deg                      Diameter

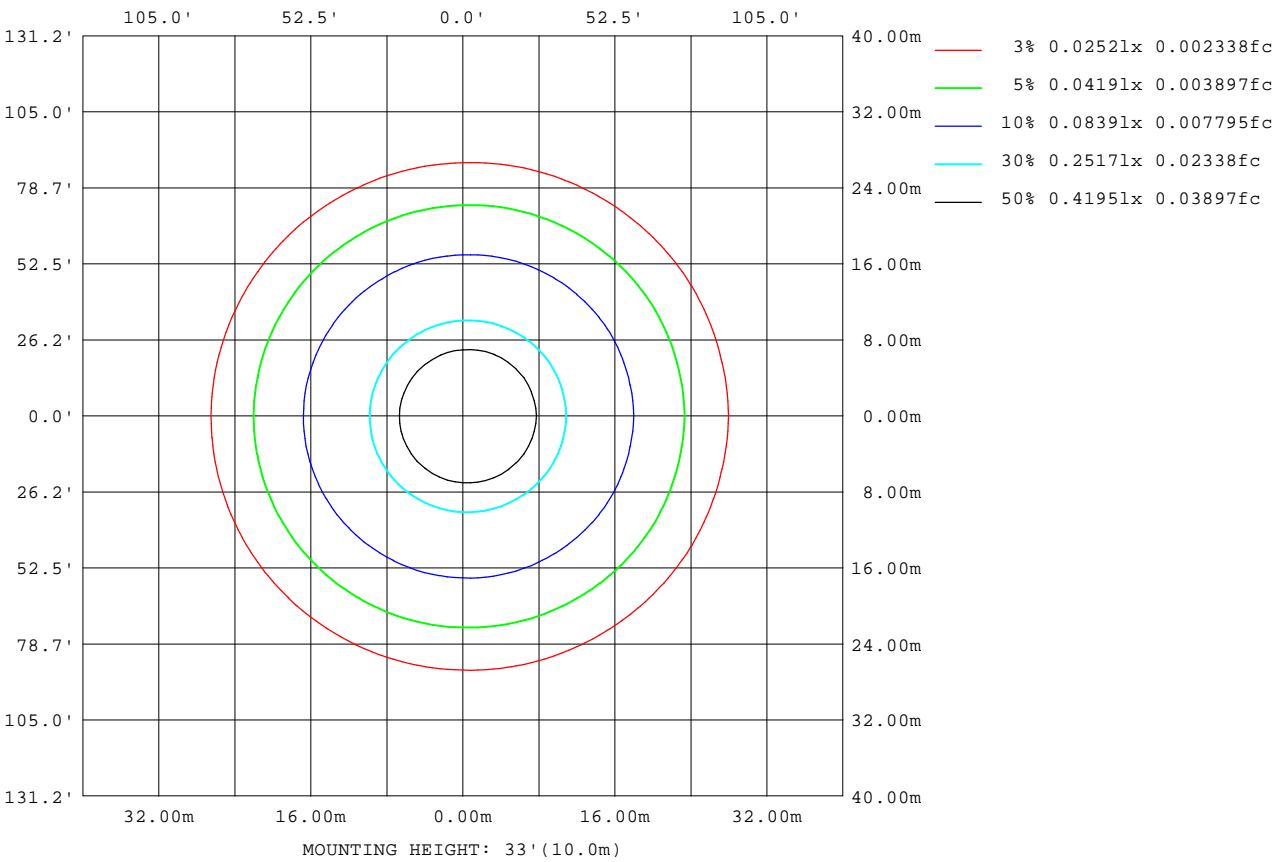
Note:The Curves indicate the illuminated area and the average illumination when the luminaire is at different distance.

C Range: 0 - 360DEG  
 C Interval: 30.0DEG  
 Test Speed: HIGH  
 Temperature:25.3DEG  
 Operators:  
 Test Date:2018-10-26

Range: 0 - 180DEG  
 Interval: 1.0DEG  
 Test System:EVERFINE GO-SPEX500\_V1 SYSTEM V2.0.405.8  
 Humidity:65.0%  
 Test Distance:3.116m [K=1.0000]  
 Remarks:

**ISOLUX DIAGRAM**

<b>NAME:</b>	<b>TYPE:</b>	<b>WEIGHT:</b>
<b>SPEC.:</b>	<b>DIM.:</b>	<b>SERIAL No.:</b> 01
<b>MFR.:</b>	<b>SUR.:</b>	<b>Shielding Angle:</b>



C Range: 0 - 360DEG  
 C Interval: 30.0DEG  
 Test Speed: HIGH  
 Temperature: 25.3DEG  
 Operators:  
 Test Date: 2018-10-26

Page Range: 0 - 180DEG  
 Interval: 1.0DEG  
 Test System: EVERFINE GO-SPEX500\_V1 SYSTEM V2.0.405.8  
 Humidity: 65.0%  
 Test Distance: 3.116m [K=1.0000]  
 Remarks:

LED Avg.L Report

NAME:	TYPE:	WEIGHT:
SPEC.:	DIM.:	SERIAL No.:01
MFR.:	SUR.:	Shielding Angle:

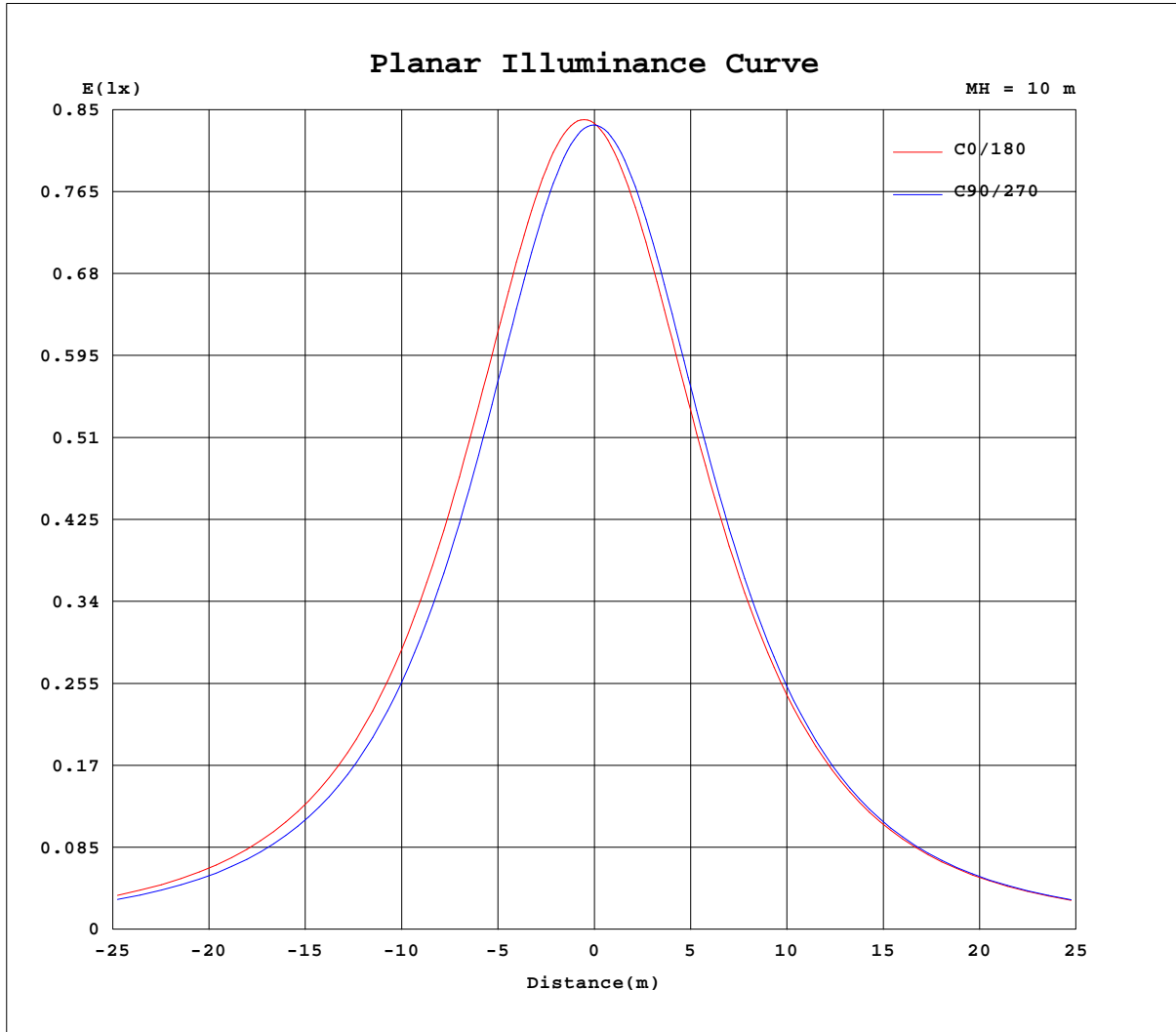
AvgL	cd/m2
L_0~180(65)av	1530
L_0~180(75)av	2239
L_0~180(85)av	5848
L_90~270(65)av	1444
L_90~270(75)av	2115
L_90~270(85)av	5547
L_45(65)av	1485
L_45(75)av	2173
L_45(85)av	5688

Standard: GB/T 29293-2012

C Range: 0 - 360DEG  
 C Interval: 30.0DEG  
 Test Speed: HIGH  
 Temperature:25.3DEG  
 Operators:  
 Test Date:2018-10-26

Range: 0 - 180DEG  
 Interval: 1.0DEG  
 Test System:EVERFINE GO-SPEX500\_V1 SYSTEM V2.0.405.8  
 Humidity:65.0%  
 Test Distance:3.116m [K=1.0000]  
 Remarks:

Planar Illuminance Curve



C Range: 0 - 360DEG  
 C Interval: 30.0DEG  
 Test Speed: HIGH  
 Temperature: 25.3DEG  
 Operators:  
 Test Date: 2018-10-26

Page Range: 0 - 180DEG  
 Interval: 1.0DEG  
 Test System: EVERFINE GO-SPEX500\_V1 SYSTEM V2.0.405.8  
 Humidity: 65.0%  
 Test Distance: 3.116m [K=1.0000]  
 Remarks:

LUMINOUS DISTRIBUTION INTENSITY DATA

NAME:	TYPE:	WEIGHT:
SPEC.:	DIM.:	SERIAL No.:01
MFR.:	SUR.:	Shielding Angle:

Table--1

UNIT: cd

C(DEG) g (DEG)	0	30	60	90	120	150	180	210	240	270	300	330						
0	83.5	83.5	83.5	83.5	83.5	83.5	83.5	83.5	83.5	83.5	83.5	83.5						
5	84.7	84.5	84.0	83.4	82.7	82.3	82.1	82.1	82.6	83.2	83.9	84.4						
10	85.6	85.3	84.3	83.0	81.7	80.9	80.6	80.7	81.5	82.6	84.0	85.1						
15	86.3	85.8	84.2	82.2	80.6	79.5	79.0	79.1	80.1	81.8	83.9	85.6						
20	86.6	85.8	83.7	81.2	79.2	77.9	77.3	77.4	78.6	80.6	83.3	85.6						
25	86.6	85.5	82.8	80.0	77.7	76.3	75.6	75.7	76.9	79.2	82.5	85.4						
30	86.1	84.8	81.7	78.4	76.0	74.6	74.0	73.9	75.0	77.5	81.3	84.7						
35	85.2	83.6	80.1	76.7	74.3	72.9	72.3	72.1	73.1	75.7	79.7	83.6						
40	83.9	82.0	78.3	74.8	72.4	71.2	70.5	70.3	71.1	73.6	77.9	82.1						
45	82.1	80.1	76.1	72.5	70.3	69.2	68.7	68.3	69.0	71.4	75.7	80.1						
50	79.7	77.6	73.5	70.1	68.0	67.1	66.7	66.2	66.7	68.9	73.2	77.7						
55	76.8	74.7	70.7	67.4	65.6	64.8	64.4	64.0	64.3	66.3	70.4	74.9						
60	73.6	71.4	67.6	64.5	62.9	62.4	62.0	61.5	61.8	63.5	67.4	71.6						
65	69.9	67.9	64.2	61.4	60.1	59.7	59.4	58.9	59.0	60.6	64.1	68.1						
70	66.0	64.2	60.8	58.3	57.1	56.9	56.7	56.1	56.2	57.5	60.7	64.3						
75	62.1	60.4	57.3	55.0	54.1	54.0	53.8	53.3	53.3	54.4	57.3	60.5						
80	58.0	56.5	53.7	51.8	51.0	51.0	50.9	50.3	50.3	51.3	53.8	56.6						
85	54.0	52.7	50.3	48.5	47.9	48.0	47.9	47.4	47.3	48.1	50.3	52.8						
90	50.2	49.0	46.8	45.3	44.7	44.9	44.8	44.4	44.4	45.0	46.9	49.1						
95	46.4	45.4	43.5	42.2	41.6	41.9	41.8	41.4	41.4	42.0	43.6	45.4						
100	42.8	41.9	40.3	39.1	38.7	38.9	38.9	38.5	38.5	39.0	40.4	42.0						
105	39.4	38.7	37.2	36.2	35.8	36.0	36.0	35.6	35.6	36.1	37.4	38.7						
110	36.2	35.6	34.3	33.4	33.0	33.2	33.2	32.9	32.9	33.4	34.5	35.6						
115	33.1	32.6	31.5	30.7	30.4	30.6	30.5	30.2	30.3	30.7	31.7	32.6						
120	30.3	29.9	28.9	28.2	27.9	28.0	28.0	27.7	27.9	28.3	29.1	29.9						
125	27.7	27.4	26.5	25.8	25.5	25.6	25.6	25.4	25.5	25.9	26.7	27.3						
130	25.2	25.0	24.2	23.6	23.3	23.4	23.3	23.1	23.3	23.7	24.4	24.9						
135	23.0	22.8	22.1	21.6	21.3	21.3	21.2	21.1	21.3	21.7	22.3	22.7						
140	20.9	20.7	20.1	19.6	19.3	19.3	19.2	19.2	19.4	19.8	20.3	20.6						
145	19.0	18.8	18.3	17.8	17.5	17.5	17.4	17.4	17.6	18.1	18.5	18.8						
150	17.2	17.1	16.6	16.1	15.9	15.8	15.7	15.7	16.0	16.4	16.8	17.1						
155	15.6	15.3	14.9	14.3	14.0	13.8	13.9	13.9	14.4	14.9	15.2	15.4						
160	13.4	13.0	12.6	11.9	11.5	11.2	11.5	11.5	12.4	12.8	13.3	13.4						
165	10.7	10.1	9.44	8.23	8.01	7.15	7.51	8.68	9.69	10.1	10.7	10.6						
170	6.04	5.00	3.59	2.19	1.52	1.90	2.49	3.90	5.25	6.48	7.03	6.57						
175	0.70	0.69	0.70	0.70	0.70	0.70	0.69	0.69	0.70	0.82	0.99	0.82						
180	0.73	0.73	0.73	0.73	0.73	0.72	0.73	0.73	0.73	0.73	0.73	0.73						

C Range: 0 - 360DEG  
 C Interval: 30.0DEG  
 Test Speed: HIGH  
 Temperature:25.3DEG  
 Operators:  
 Test Date:2018-10-26

g Range: 0 - 180DEG  
 Interval: 1.0DEG  
 Test System:EVERFINE GO-SPEX500\_V1 SYSTEM V2.0.405.8  
 Humidity:65.0%  
 Test Distance:3.116m [K=1.0000]  
 Remarks: